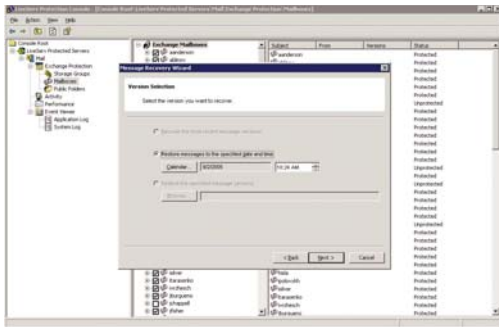


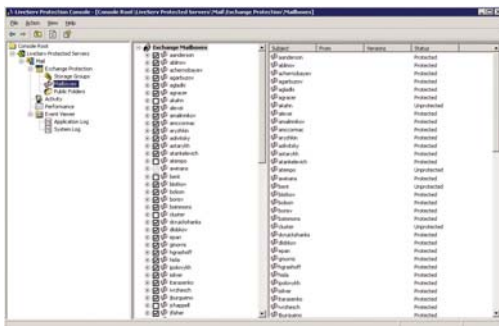
ATEMPO LiveServ™

CONTINUOUS DATA PROTECTION FOR MICROSOFT EXCHANGE SERVERS



Message Recovery

The Message Recovery Wizard allows you to recover message from a specific date



Atempo LiveServ Protection Console

Administrators can protect and recover mailbox data across an entire organization

Atempo LiveServ for Exchange provides unparalleled data protection and rapid data recovery at an affordable price. LiveServ accomplishes multiple backup tasks such as mailbox protection and server recoverability, in one simple solution. LiveServ can recover lost or deleted e-mail messages in minutes, not hours, and can recover an entire Exchange server in under an hour, with zero data loss.

This eliminates the need to search extensive tape backup libraries for lost data, or spend days recovering from a failed server. With LiveServ, lost or deleted data is recovered immediately and efficiently by one person.

The time and money traditionally spent in disaster recovery is now a fraction of the cost and the ROI is instantly actualized.

KEY FEATURES AND BENEFITS

Atempo LiveServ is the industry's only Microsoft Exchange-specific continuous data protection (CDP) solution. Recover messages, mailboxes, or databases from any point in time without disrupting Exchange availability. Atempo LiveServ's disk-to-disk, policy-based approach keeps management to a minimum while maximizing both large- and small-scale recovery possibilities.

Continuous Data Protection

Atempo LiveServ protects Exchange data down to message-level in real time. Data is backed up immediately and transparently, ensuring data will be protected up to the moment of failure with no intrusion on the end user.

Fast Message-Level Recovery

Atempo LiveServ can protect and restore mailbox items for an entire organization. Each mailbox item is handled and stored individually, allowing for fast, easy recovery of a single item.

Unlimited Restore Points

Atempo LiveServ's Point-in-Time recovery capabilities allow organizations to recover from corruption or malicious code by simply selecting a date and time from where to restore.

Capacity-Optimizing Storage

Atempo LiveServ utilizes a combination of technologies such as data compression, single-instancing, redundancy elimination, and data aging to ensure data is stored fast and efficiently.

Seamless Integration

Atempo LiveServ can be easily implemented without disrupting existing Exchange data protection methods within an organization. Atempo LiveServ integrates seamlessly with tape backup solutions to ease the adoption of new technology.

ATEMPO LiveServ™

ATEMPO LIVESERV HIGHLIGHTS

○ KEY HIGHLIGHTS

Continuous, real-time data protection
Transparent Operation
Point-of-failure rollback
Eliminates windows of vulnerability associated with scheduled backups
Supports continuous operations with zero server downtime
Seamless integration with tape-based E-mail backup systems
Easily integrates into clustered environments
Reverses the effects of viruses, human error, hardware and software malfunctions, system failures, and malicious code

○ PROTECTION

Protection is robust and perpetual
Efficiently reduces the total volume of data to be backed up

- Eliminates redundancy at file attachment and block levels
- Duplicate copies of Email attachments are collapsed
- Collapses data across multiple Exchange servers

No temporary server or database configuration needed

○ RECOVERY

Data can be recovered while server is online
Brick-level recovery enables instant restores of individual mailbox items
Recover an entire storage group or a single store; Select any version by point-in-time or most recent
Mailbox-level recovery ability for an entire organization



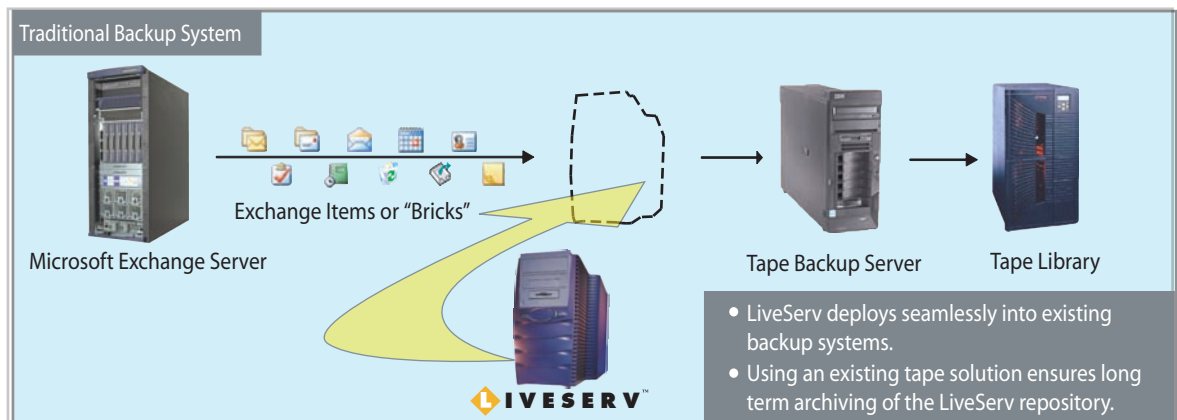
Minimum System Requirements

501-2500 Mailboxes:

- Microsoft Windows Server 2000 or 2003
- Microsoft SQL Server 2000 Standard Edition (5-pack CALs)
- Dual Pentium 4GHz or Xeon 3GHz processor or faster
- 4GB RAM or more
- 250MB free disk space
- RAID 0+1 or 1+0 disk system recommended

Storage:

- Storage requirements vary based on rate of change and data retention settings.
- 3x to 5x of aggregate information store size is recommended.



Solution Centre Limited
Vickers House
Priestley Road
Basingstoke, RG24 9NP.



Tel: 01256 818600
Fax: 01256 819600
E-Mail: sales@solutioncentre.co.uk
www.solutioncentre.co.uk

