

ATEMPO LiveBackup™

CONTINUOUS DATA PROTECTION FOR DESKTOPS AND LAPTOPS



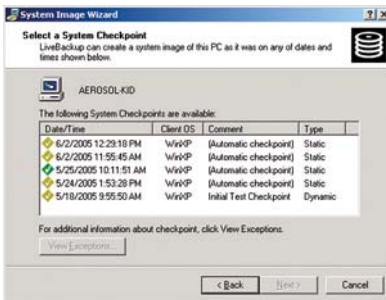
Recovery Assistant

Point and click interface makes files recovery simple

With Atempo LiveBackup, IT administrators can provide their organization with the most comprehensive data protection and recovery tools available, without increasing their department's workload. LiveBackup's client-server architecture features familiar Windows interface requiring minimal training for end users, so they can readily use the software's self-serve recovery capabilities without IT assistance.

LiveBackup's Microsoft Management Console is easy on IT administrators, enabling them to centrally manage all of a corporation's distributed data assets, simplifying restoration and other activities. LiveBackup is enterprise ready and designed to provide maximum storage for the network while maintaining complete transparency.

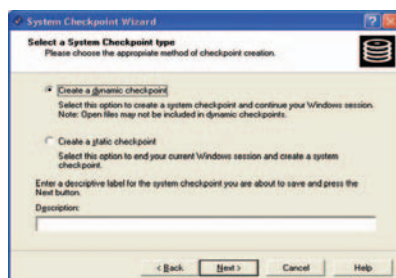
KEY FEATURES AND BENEFITS



System Image Wizard

Create a system image to roll back to a previous state

- **Real Time Protection**
CDP technology monitors files for changes and backs up data as it is saved, thus ensuring recovered data will be as recent as the last save
- **Transparency**
Data is backed up automatically, without end-user work pattern interference or network overload
- **Disconnected State Support**
LiveBackup protects PC data in a disconnected state, backing up laptops even while they're roaming
- **Central Management**
Administrators can enforce consistent backup policies across the WAN and can control features available to individual users
- **Remote Administration**
Using the Microsoft Management Console interface, administrators can remotely repair malfunctioning systems
- **Self-Serve File Recovery**
Users can recover their own files without the help from IT staff, lowering TCO and improving productivity
- **System Rollback**
Versioning capability allows malfunctioning systems to be easily restored without time-consuming troubleshooting
- **True Bare-Metal Disaster Recovery**
Lost, stolen or unbootable PCs and laptops can be completely restored without the need to reinstall the operating systems and applications; the procedure takes only hours (vs. days)
- **Enterprise Ready**
Data compression and redundant file elimination increase storage efficiency and minimizes impact on network bandwidth



Checkpoint Wizard

Create checkpoints anytime, without restarting your machine.



ATEMPO LiveBackup

LIVEBACKUP HIGHLIGHTS

Transparent Continuous Data Protection

LiveBackup offers Continuous Data Protection and acts transparently in the back-end of your end-users PCs. The end-user doesn't have to worry about anything while his/her critical data is being backed up. There is no need anymore for scheduled backups of your desktops and laptops. LiveBackup runs silently and catch all the changes while they occur and send them to the backup server. On top of that, the data is also protected even when the machine is not connected to the network. LiveBackup is finally able to track and backup hard-to-protect outlook inboxes.

Seamless Data Recovery

LiveBackup gives you the assurance that you can restore any data as recent as the last save. It also gives you the ability to roll back an entire system to a "good" state in hours. The end-user's self-serve restore capability lightens IT loads and minimizes downtimes, lowering TCO and improving productivity.

Central Administration & Easy Management

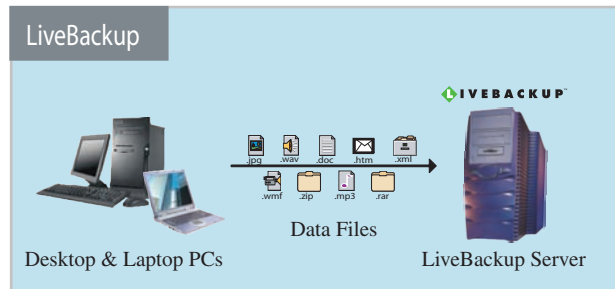
LiveBackup enables you to centrally manage all backed up data from local desktop, remote desktops and laptops. The impact on the network bandwidth is minimized using data compression and redundant file elimination. LiveBackup also offers easy to use management tools to give the ability to the administrator to remotely repair malfunctioning systems, create bare-metal disaster recovery images and enforce consistent backup policies.



Minimum System Requirements

Storactive LiveBackup Server:

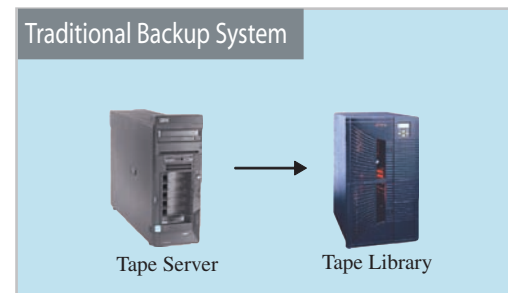
- Windows 2000 Server or Advanced Server with Service Pack 2 or Windows Server 2003; Standard or Enterprise Edition
- Intel Pentium Pro processor or higher or AMD Athlon processor or higher
- 512MB RAM
- Microsoft SQL Server 2000 Standard Edition with Service Pack 3a
- 5GB free disk space
- TCP/IP
- Internet Explorer 5.01 SP2 or higher



LiveBackup saves changes to user data as they are made, ensuring that protected data is as current as the last save. LiveBackup even protects laptops while offline or roaming.

LiveBackup's scalable architecture and sophisticated management console allow Live-Backup to deliver these benefits in "lights out" fashion, with minimal impact on the IT staff and the network.

Optional integration with existing backup systems.



LiveBackup works seamlessly with all popular enterprise tape backup solutions.

Solution Centre Limited
Vickers House
Priestley Road
Basingstoke, RG24 9NP.



Tel: 01256 818600
Fax: 01256 819600
E-Mail: sales@solutioncentre.co.uk
www.solutioncentre.co.uk