

## iShaper™

### Unified Appliance for the Next Generation Branch Office

Packeteer® iShaper marries the best of real-time WAN optimization, monitoring and shaping with wide area file services (WAFS), and provides key Microsoft services in one easy-to-manage *unified branch office appliance* to deliver great performance for every application — voice, video and data.

Step into the next generation branch office where industry-leading technologies work in concert to solve the performance, manageability and data integrity problems facing the branch today. Streamline operational complexity, deploy critical business applications with LAN-like speed and dramatically improve centralized access to data without sacrificing security for performance.



#### Key Benefits

- **Simplify branch office infrastructure and slash operational costs** while significantly increasing branch office user productivity and satisfaction.
- **Realize the benefits of consolidation, convergence and beyond** with new levels of performance and quality for all applications, including voice, video and data.
- **Extend the data center to the branch** by providing full-fidelity Microsoft services — from printing to authentication — natively from one appliance.
- **Confidently centralize servers and storage without compromising data** integrity, security and performance.
- **Enjoy fast file access, high quality IP telephony and LAN-like delivery** of business-critical applications.



# iShaper

## Unified Appliance for the Next Generation Branch Office

### Modern Branch Office Dilemma: Wanting It All

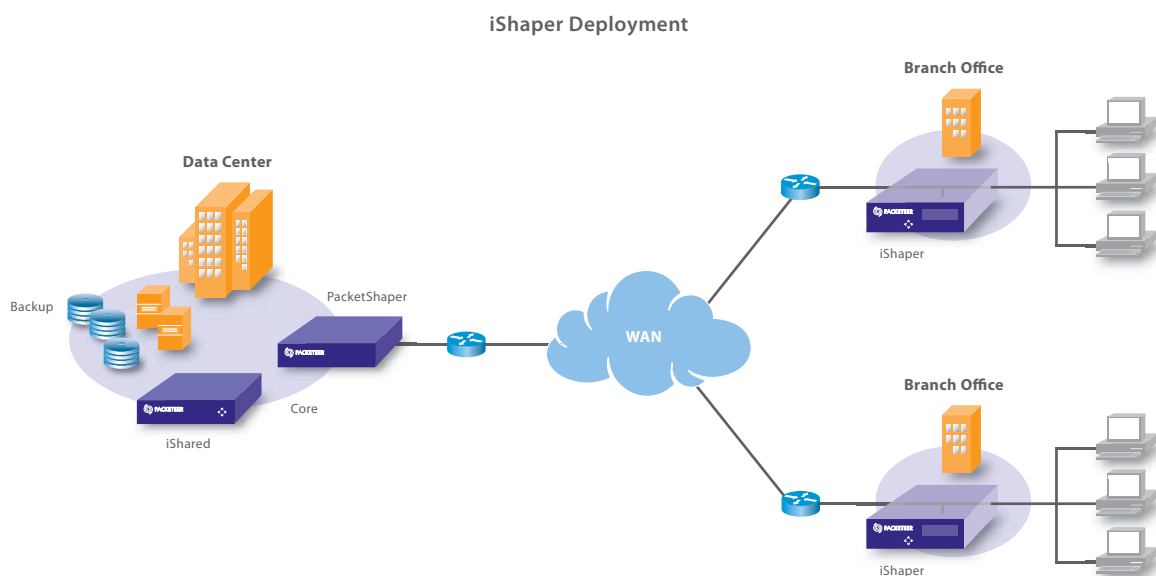
Today's branch office demands high performance from all of your business-critical applications — Enterprise Resource Planning (ERP), Customer Relationship Management (CRM), files, e-mail and telephony — in an increasingly consolidated IT environment. Not easy to accomplish when centralization forces you to intensify WAN dependency for application delivery and file access, with corresponding performance and complexity issues. Slow file access, low quality IP telephony and unreliable ERP applications serve to undermine consolidation's security, compliance, simplicity and cost benefits.

### Data integrity and application performance in conflict

The real challenge lies in meeting branch office worker performance imperatives while still protecting data integrity in a centralized system — something that, until now, seemed virtually impossible. Previously, your only options were to collectively deploy dedicated WAFS appliances and point acceleration products to achieve these ends, with painful results. WAFS and WAN optimization often work in conflict; WAFS may slow things down, while optimization can undercut security and compliance.

### iShaper: Unified Application Delivery Infrastructure

iShaper introduces the next generation branch office: WAFS and WAN optimization working in concert — without one compromising the other — in a single device that streamlines operations and maximizes performance at a fraction of the cost of today's branch office. Think of iShaper as a virtual main office, where corporate data center centralization and data protection meet application visibility, quality of service (QoS) and IT services at the branch utilizing iShaper's unique Dual Plane architecture. And, as a Packeteer solution built on application intelligence, iShaper radically improves application performance and data access while protecting from the effects of latency, congestion and aggressive recreational applications. iShaper integrates deep visibility, intelligent acceleration, Microsoft services, application QoS and zero day protection into one appliance.

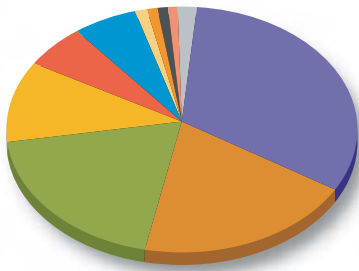


Installed in branch locations, iShaper provides all WAFS and WAN optimization benefits in an easily managed, single appliance that delivers great performance to all of your key applications. Packeteer PacketShaper® and iShared® complete the picture with increased visibility and availability at the data center.

## Deliver Great Performance for Your Business-Critical Applications

Control, protect and provide LAN-like delivery of centralized data, services and critical business applications at your branch office locations. iShaper leverages Packeteer's Deep Layer 7 Plus visibility, application intelligent QoS and intelligent acceleration to ensure the availability and highest performance of applications that matter most to your users while curtailing the impact of non-business network traffic.

Classify Over 600 Applications



Class Name	Average Rate	
	(Kbps)	(%)
1 Exchange	49.3	32
2 HTTP	36.9	23
3 Citrix-Published APP1	30.8	19
4 YouTube	12.8	8
5 Citrix-Print	9.0	6
6 NetBios-IP	8.6	5
7 BitTorrent	2.0	1
8 Oracle	1.9	1
9 Flash Video	1.7	1
10 HTTPS	1.4	1
11 All Other Classes	4.8	3

Packeteer Layer 7 Plus visibility differentiates between over 600 applications including sub-classifications like Citrix® print versus Citrix ICA traffic. You can identify, monitor, differentiate and apply specific QoS or acceleration to application traffic at unprecedented levels of granularity.

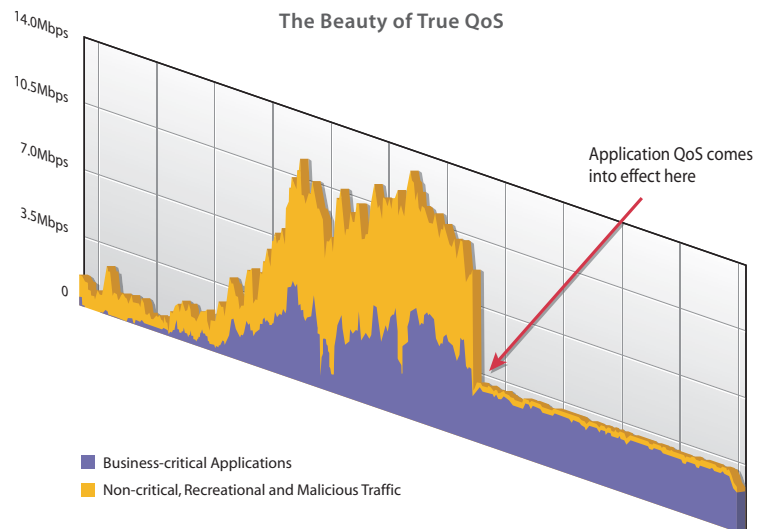
### Visibility

Discover what's on your network and apply the right optimization tools to the right applications with industry-leading Deep Layer 7 Plus technology. iShaper analyzes traffic running across your WAN, inspecting it at all layers of the protocol stack and identifies and classifies over 600 applications for intelligent use of iShaper QoS and acceleration features.

### Application QoS

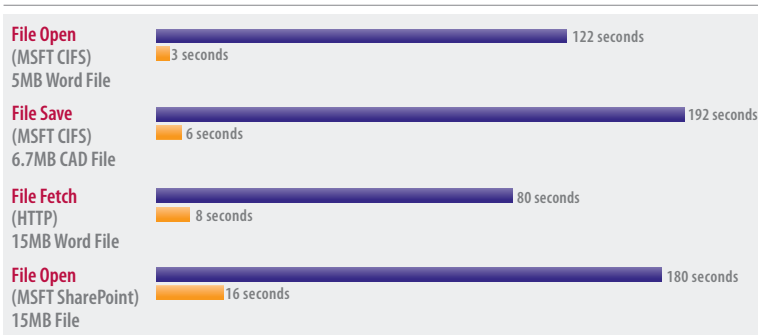
Take QoS beyond queuing and port-based marking to cure network congestion causing slow branch office response times and to ensure service levels for key applications. iShaper provides the application intelligence needed to protect availability and fine-tune application performance — all while containing recreational and malicious traffic. With iShaper QoS, apply the rules and controls to match bandwidth allocation with business needs.

The Beauty of True QoS



iShaper intelligent application QoS smooths traffic, guarantees bandwidth for business-critical applications (shown here in purple) and guards against non-critical, recreational and even malicious traffic.

## Acceleration Intelligently Applied to the Right Applications



Speed alone won't ensure your business-critical traffic gets the priority and resources it deserves. Packeteer Intelligent Acceleration optimizes performance and slashes response times (shown here in orange) for the applications that matter most.

## Consolidate Branch Office IT without Compromise or Cost

Realize the promise of a true branch office infrastructure consolidation by bringing data center services to the branch — removing complexity, centralizing applications, consolidating storage, converging voice and video and slashing branch operational costs.

## Eliminate residual branch servers with single appliance simplicity

iShaper's single unified appliance simplicity provides true branch infrastructure consolidation with the only file-aware WAFS implementation with coherent, read/write least recently used (LRU) RAID-backed caching at branch locations. With localized delivery of native Microsoft print, Systems Management Server (SMS), DNS/DHCP and Domain Controller, you can eliminate all residual remote servers from branch locations.

Consolidate infrastructure, add intelligence. As well as enabling server consolidation, iShaper eliminates the need for multiple residual servers and acceleration-only products in the branch, delivering strong business returns on your investment.

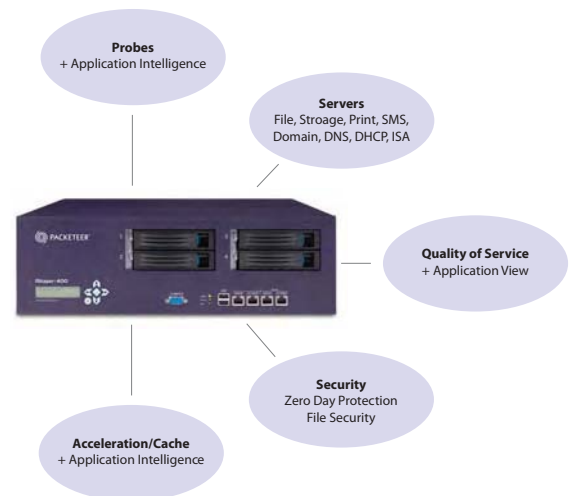
## Intelligent Acceleration

Overcome protocol and WAN latency as well as reduce the amount of data traveling to the branch — to speed up large file transfers and web-based applications leveraging Packeteer Intelligent Acceleration. Native Common Internet File System (CIFS)-based protocol acceleration strips latency from Windows® file serving while preserving Microsoft compliance, on the first pass, while compression boosts performance and dramatically reduces file access time. iShaper automatically and transparently ensures the best performance for frequently accessed data with its self-managing cache.

## Microsoft Branch Services

Deliver full-fidelity Microsoft services from the same unified branch office appliance that delivers great application performance. iShaper provides local printing, authentication services including Domain Controller, updates and networking services locally so users in the branch enjoy the same level of service and performance as they would in the data center.

## Consolidate Branch Office IT



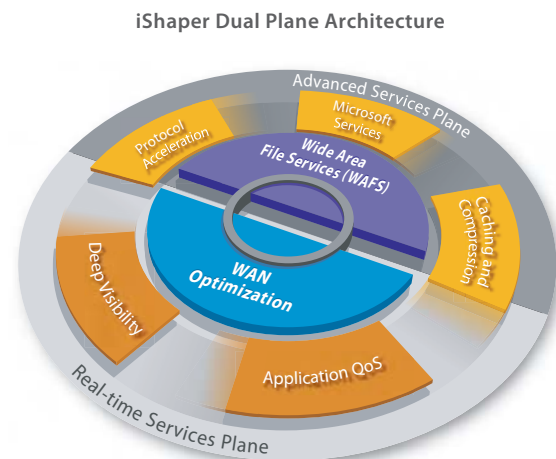
## Get Back in Control of Storage Growth and Uncertain Backup Processes

iShaper Advanced Services fully and continuously synchronizes files between sites, delivering fast file access and application acceleration without negatively impacting users or security. Based on full-fidelity Microsoft Windows Server® technologies, iShaper fully integrates with all native Microsoft networking, sharing, management and security processes. Critical file, security, backup and storage are safe and sound.

## iShaper Dual Plane Technology — The Perfect Pairing of Inline WAN Optimization with Out-of-band WAFS

What sets iShaper apart is its innovative Dual Plane architecture, offering the benefits of inline WAN optimization features combined with out-of-band WAFS, without one compromising the other. Working hand in hand at the branch, these unique service planes ensure top performance of all your most critical business applications by applying the appropriate technology — not just what's available – where it's needed most.

Network traffic passes through the Real-time Services Plane where iShaper intelligent redirect determines the right technology to apply. If the traffic is ERP, transactions and VoIP, for example, it will pass through the inline mode where it will be shaped and optimized. If, on the other hand, it's a Windows file or e-mail attachment, then it will be sent to the Advanced Services Plane for disk-based acceleration and compression, full protection, and compliance.



### One System

iShaper Dual Plane architecture decouples the network flow from disk-based services with tight integration and high-speed intercommunication in between. The result: Unmatched performance and unprecedented levels of availability, scalability and extensibility at the branch office.

### Real-time Services Plane

When immediacy is the imperative, the Real-time Services Plane offers inline high-speed and near-zero latency flow processing essential for high availability, QoS and compression for applications that demand the immediacy of WAN optimization.

### Advanced Services Plane

When security and compliance are in order, the Advanced Services Plane provides out-of-band, disk-based services including WAFS, caching and bulk optimization, as well as full-fidelity Microsoft-branch services needed for the next generation branch office.

## Your Partner in Success — Packeteer Support, Training and Certification

PacketCare is a comprehensive suite of service and support options designed to help you take a proactive approach to maintenance and prevent productivity loss. Multiple levels of service and support packages ensure there is an appropriate level of coverage available for your needs. Packeteer offers technical training on installation, configuration and day-to-day management of the Packeteer solution. A standard training program combined with two available levels of certification ensure that you get the maximum benefit from your investment.

*Don't let the next generation branch office pass you by. For more information on iShaper and other Packeteer products and solutions go to [www.packeteer.com](http://www.packeteer.com).*



### Step into the Next Generation Branch Office

The perfect combination of deep visibility, real-time WAN optimization, WAFS technologies and branch services, iShaper provides great application performance at the branch office for every application — voice, video and data. Only iShaper enables the next generation branch, streamlining operational complexity while greatly improving centralized data access and delivery.

iShaper Features & Benefits	
Features	Benefits
Deep Layer 7 Plus Visibility <i>Performance Monitoring</i>	<ul style="list-style-type: none"> <li>Proactively track, troubleshoot, measure and manage network resources</li> <li>Select the right tools to fix any problem</li> <li>Automatically discover and classify 600+ applications and protocols</li> <li>Monitor key network/application statistics and service level agreements (SLAs) in real-time</li> </ul>
Application-intelligent QoS <i>Provisioning Policy</i> <i>Application Availability</i>	<ul style="list-style-type: none"> <li>Protect availability and performance of key applications</li> <li>Proactively control and smooth traffic at branch office</li> <li>Identify and restrict evasive applications like peer to peer (P2P) or consumer media</li> <li>Mark per application and for multiprotocol label switching (MPLS) class of service</li> <li>Automatically protect key applications with DDoS, virus and worm propagation suppression</li> </ul>
Intelligent Acceleration <i>TCP &amp; HTTP Acceleration</i> <i>CIFS Protocol Acceleration</i> <i>Data Compression</i> <i>Caching</i> <i>File Differencing</i>	<ul style="list-style-type: none"> <li>Eliminate WAN round-trip latency effects and disruptions with protocol-layer TCP, HTTP and CIFS Acceleration</li> <li>Accelerate files and bulk applications while protecting key transactional ERP applications</li> <li>Create additional bandwidth with real-time data compression</li> <li>Reduce WAN traffic with byte-level data caching and file differencing</li> <li>Limit traffic from attachments with application-intelligent caching for Microsoft Exchange</li> </ul>
WAFS <i>Virtual Backup</i> <i>Virtual Storage</i>	<ul style="list-style-type: none"> <li>Maintain 100 percent coherency via virtual backup and lock/lease management</li> <li>Retain offline access to files during WAN outages</li> <li>Deploy single Instance Virtual Storage caching with no single point of failure</li> </ul>
Microsoft Branch Office Services <i>Domain Controller &amp; Authentication</i> <i>Networking; DNS/DHCP</i> <i>Security</i> <i>Print Services</i> <i>Web Caching</i> <i>SMS</i>	<ul style="list-style-type: none"> <li>Eliminate locally managed branch servers, removing print/networking services from WAN</li> <li>Enjoy end-to-end Microsoft security compliance with Windows transparency and integration</li> <li>Require no data mirroring at data center or branch with one point storage caching</li> <li>Enable branch office continuity by delivering Microsoft Services locally</li> </ul>
Dual Plane Architecture <i>Real-time Services</i> <i>Advanced Services</i>	<ul style="list-style-type: none"> <li>Enjoy integration and future proofing with Microsoft architectures</li> <li>Gain complete control of bandwidth</li> <li>Ensure file integrity and full application availability without compromising performance</li> <li>Support end-to-end security mechanisms (SMB signing, IPsec) on full-fidelity Microsoft Windows services</li> <li>Deliver disk intensive bulk operations and branch services in a separate service plane</li> </ul>
Data/Voice/Video Convergence <i>Voice Quality Assurance</i> <i>Video Quality Control</i>	<ul style="list-style-type: none"> <li>Monitor voice call quality and ensure SLAs</li> <li>Identify and separate recreational video from business conferencing, containing playtime</li> <li>Monitor quality of video conferencing applications, using QoS to ensure high performance session setup and quality</li> </ul>

Specifications			
iShaper 400	IP400 100GB	IP400 250GB	IP400 600GB
Hard Drive	1 x 250GB	3 x 250GB	4 x 250GB
Data Store	100GB	300GB	600GB
RAID	No	RAID 5	RAID 5
Power Supply	One (Redundant Optional)	Redundant	Redundant
Network Connection	<ul style="list-style-type: none"> <li>LAN (Inside) 10/100/1000</li> <li>WAN (Outside) 10/100</li> <li>Backup Ports (10/100)</li> </ul>		
Microsoft Service Options	Branch Office and Workgroup Editions available <ul style="list-style-type: none"> <li>Workgroup: Print (up to 4 printers), DHCP, DNS, WAFS, SMS</li> <li>Branch Office: Above plus Domain Controller, ISA, and unlimited printers</li> </ul>		
Form Factor	3U rack mount		
Post-optimized Traffic Rate	10Mbps		

Solution Centre Limited  
Vickers House  
Priestley Road  
Basingstoke, RG24 9NP.



Tel: 01256 818600  
Fax: 01256 819600  
E-Mail: [sales@solutioncentre.co.uk](mailto:sales@solutioncentre.co.uk)  
[www.solutioncentre.co.uk](http://www.solutioncentre.co.uk)

