

S3 | control PCI Pro Edition

Highlights

- Real-time change monitoring for server, databases, network devices and Active Directory servers
- Centralized data repository to securely store audit trails
- Prepackaged PCI audit reports to prove compliance

Solidcore's S3 Control™ PCI Pro Edition™ provides a comprehensive file integrity monitoring (FIM), audit trail and network configuration audit solution designed to help merchants and service providers quickly, easily and cost-effectively meet the following 30 Payment Card Industry Data Security Standard (PCI DSS) requirements:

PCI Requirement	Endpoint Types	PCI Pro Edition
§ 11.5 and 10.5.5 – File Integrity Monitoring	Servers	✓
§ 10.2.1, 10.2.3, 10.2.4, 10.2.5 - Access to cardholder data	Databases	✓
§ 1.1.3, 1.1.5, 1.1.8, 1.1.9, 1.2, 1.3.1, § 1.3.5, 1.3.6, 1.3.7, 1.4.2 – Configuration Standards	Network Devices	✓
§ 10.2.2, 10.2.7 - Actions by privileged users § 10.3.1 – Username Tracking	Servers, Databases, Network Devices	✓
§ 10.3.2, 10.3.3, 10.3.4, 10.3.5, 10.3.6 – Event Attributes § 10.5.1, 10.5.2, 10.5.3, 10.5.4, 10.5.5 – Securing the Audit Trail § 10.7 – Maintaining Audit Trail History	Servers, Databases, Network Devices	✓

File Integrity Monitoring (PCI DSS § 11.5 and 10.5.5)

PCI DSS sections 10 and 11 specify the use file integrity monitoring, which is the capability to monitor changes to files and directories on a server. The changes can be to content, permissions or both. PCI DSS compliance specifies that changes to existing data in log files must be detected, whereas the addition of new data can be ignored (PCI DSS §10.5.5). For other files, such as critical configuration files, any change may be important (PCI DSS §11.5). When a change of interest occurs, the FIM solution needs to provide an alert.

These requirements have previously been difficult to satisfy because existing tools have merely provided “periodic” file integrity monitoring capabilities that would detect changes through resource-intensive system scans. Solidcore has solved this problem by developing a revolutionary “continuous”

file integrity monitoring (CFIM) technology that detects all changes in real-time with a very small performance overhead. The Solidcore S3 Control™ PCI Pro Edition™ gives IT and compliance professionals continuous file integrity monitoring with a minimal impact on system resources, eliminating the need to perform repeated scan after scan.

Detecting all changes is important for sustaining compliance because it allows organizations to see where their compliance policies are being challenged and address inappropriate change at the source. Related to this, if a file is changed inappropriately and then changed back, it creates a transient compliance violation. The continuous FIM capabilities of Solidcore's PCI Pro Edition captures change and information about the user who made the change. Alerts can also be configured to warn administrators when a transient violation occurs.



“Working with our QSA helped us get Solidcore approved as one of our key controls for PCI compliance. Solidcore is now helping free us from our old file-scanning and manual reporting procedures to help us meet the file monitoring and change control requirements of PCI.”

- Bobby Wen,
Manager of IT Operations
Restoration Hardware

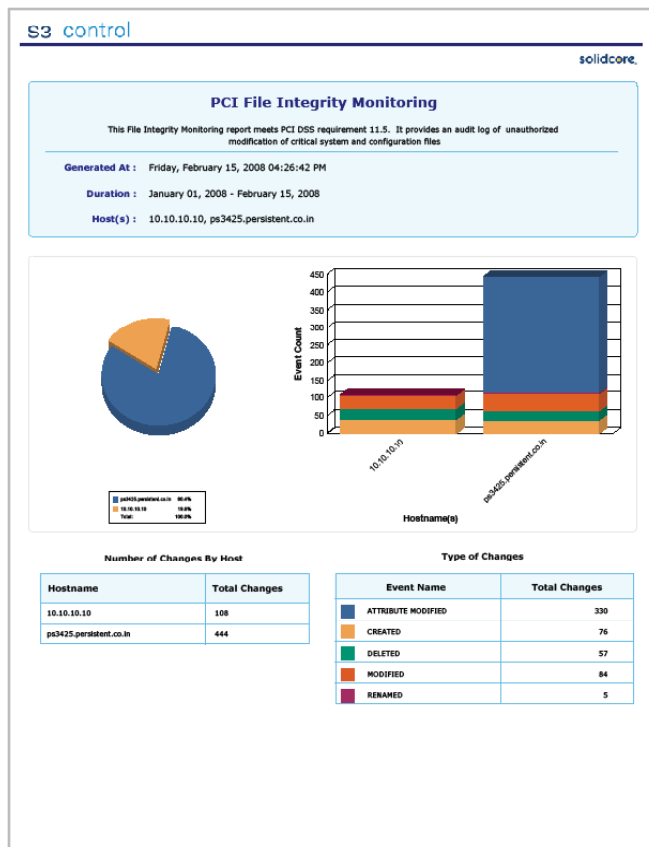
“Solidcore’s PCI Pro gives us a quick and simple way to audit our critical systems and files, and allows me to quickly identify exceptions and violations on specific servers, or those across our entire IT environment.”

- Keith Spahn,
Systems Administrator,
Clerk of the Circuit Court
Sarasota, Florida

The S3 Control PCI Pro Edition comes pre-packaged with filter profiles and reports that can be used to track and audit changes to critical operating system and application files. An intuitive Web-interface also makes the customizations of these filter profiles an easy task.

Supported Platforms:

Windows (NT, 2000, 2003, XP), AS400/iSeries/System i, Solaris, AIX, HP-UX, and Linux.



File Integrity Monitoring report for PCI DSS 10.5.5 and 11.5

Audit Trails (PCI DSS § 10)

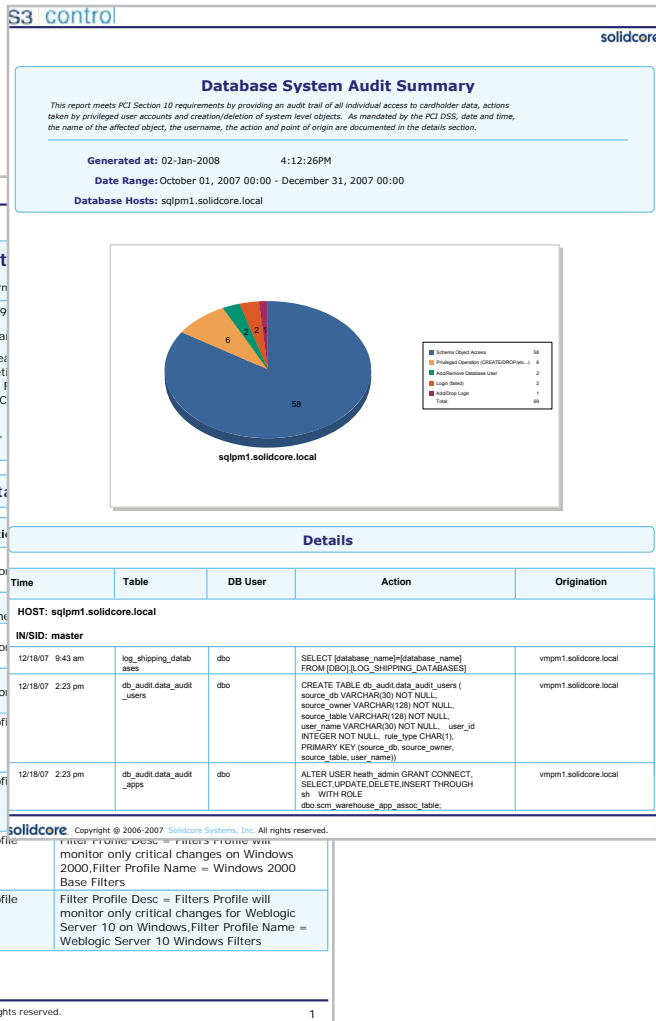
PCI DSS Section 10 lists the requirements of monitoring all access to network resources and cardholder data. Monitoring activity and changes on database servers is especially critical to pass the section 10 audit. Solidcore’s S3 Control PCI Pro Edition not only tracks the schema and data changes, but also database login activity, changes to roles, users, and permissions. The PCI Pro Edition S3 Control also audits database access (SELECT statements), and can identify the user and the program that queried sensitive data.

The audit trail from servers, databases and network devices are managed and

stored by The S3 Control PCI Pro Edition in a central database. The database can be secured to prevent highly privileged users, including powerful application database administrators, from accessing sensitive applications and data outside their authorized responsibilities.

Supported Platforms:

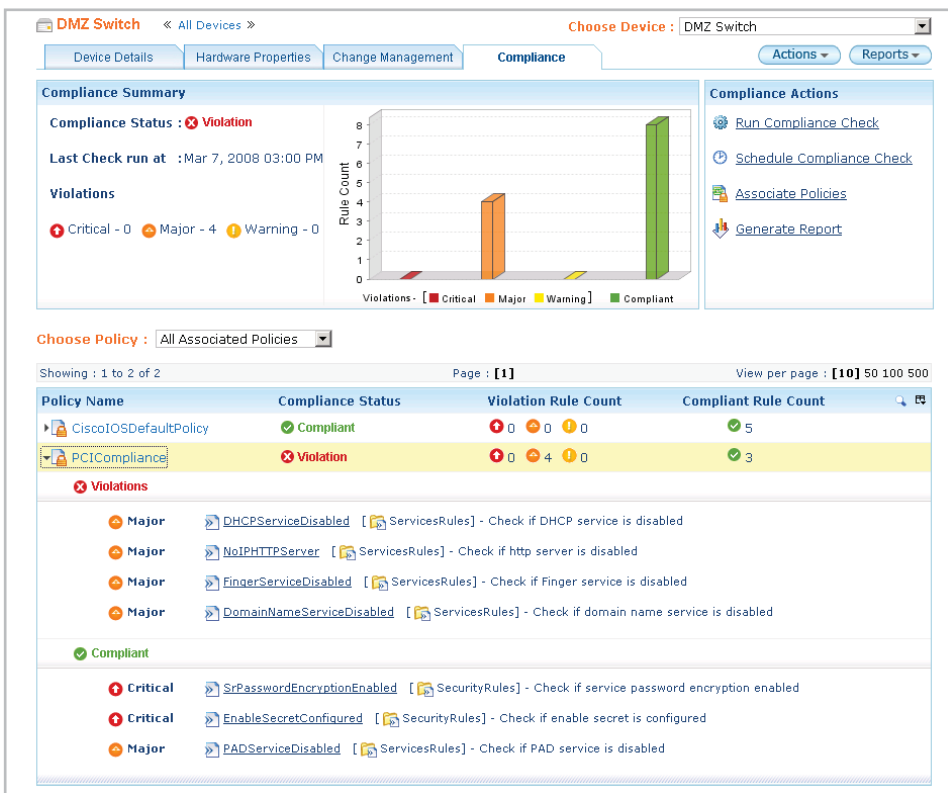
Oracle 7.3, 8.0, 8i, 9i, and 10g; Microsoft SQL Server 6.5, 7, 2000, and 2005; Sybase SQL Server and Sybase Adaptive Server Enterprise 10.x, 11.x, and 12.x; Sybase Adaptive Server Anywhere 6, 7, 8, and 9; IBM DB2 5.x, 6.x, 7.x, 8.x for Linux, Unix and Windows; IBM DB2 6.x, 7.x, 8.x for z/OS and OS/390; and IBM DB2 5.x for OS/400 (iSeries/System i).



“Solidcore’s new offerings provide a means for PCI-challenged organizations of all sizes to rapidly attain difficult-to-achieve maturity in more PCI requirements, and at an affordable combination of cost and essential features that meet multiple requirements for a broad range of businesses.”

- Scott Crawford,
 Security Research Director
 EMA

Audit Trail report that meets PCI DSS 10 requirements



Dashboards and reports can be used to identify unauthorized changes and improve policy compliance for network devices.

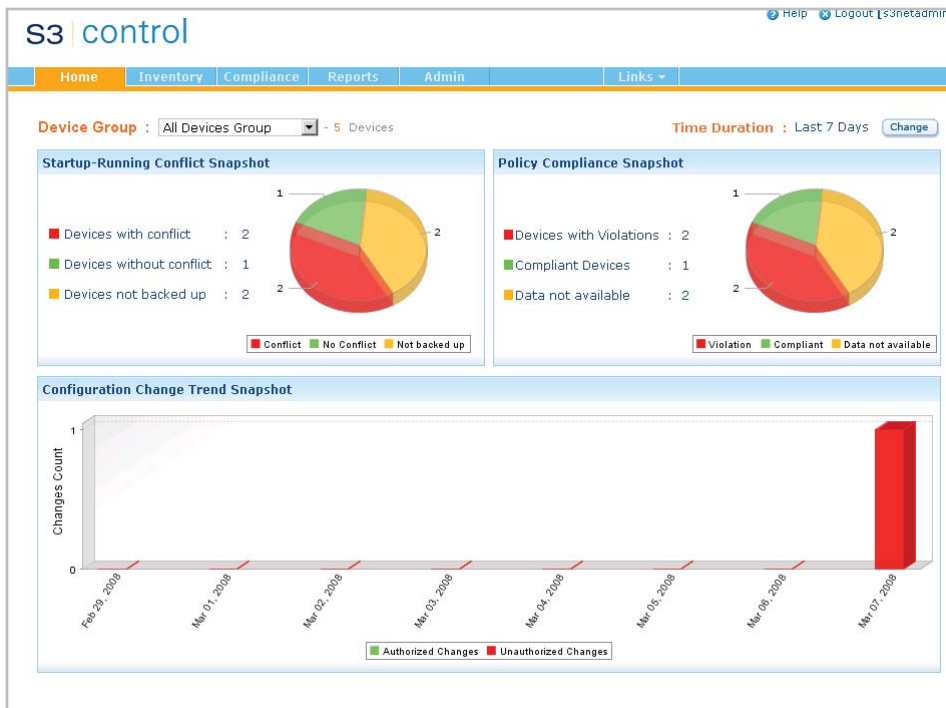
Network Configuration Management (PCI DSS § 1)

PCI DSS section 1 states that network devices, like routers and firewalls that transmit cardholder data, must be protected from man-in-the-middle attacks and data breaches. The network is only as strong as its weakest link, and even one poorly configured network device could put the business at risk. The S3 Control PCI Pro Edition allows organizations to establish configuration standards for network devices and provides the capability to monitor the compliance of the devices in real-time.

All configuration changes are tracked and versioned to meet the PCI DSS section 10 requirements for audit trails. Policies can also be set to rollback to a "Trusted Device Configuration" when any unauthorized configuration change is detected.

Supported Platforms:

Solidcore S3 Control PCI Pro Edition supports integration with more than 300 network devices, including those from device vendors such as Cisco, HP, Nortel, Force10, D-Link, Juniper-NetScreen, 3Com, Foundry, Fortinet, ADTRAN, Enterasys, Huawei, Extreme, Proxim, Aruba and Blue Coat.



Startup-Running conflict graph identifies devices that violate PCI DSS 1.3.6 guidelines to secure and synchronize router configuration files.

Summary

Solidcore S3 Control PCI Pro Edition provides immediate, cost-effective PCI compliance for many PCI DSS requirements outlined in sections 1, 10 and 11 (network device configuration, audit trail and file integrity monitoring). Sold via an annual subscription that minimizes first year costs, the PCI Pro Edition provides a solution that is both affordable and expandable.

The S3 Control PCI Pro Edition is upgradeable to Solidcore's S3 Control Enterprise edition, which allows organizations investing in a PCI compliance solution to easily expand to Solidcore's flagship operational change control solution for broader IT benefits that include higher IT service availability, Sarbanes-Oxley compliance and streamlined Information Technology Infrastructure Library (ITIL) processes.

Product Pricing and Support

- Solidcore S3 Control PCI Pro Edition is available via an annual subscription that minimizes first-year compliance costs.
- Yearly subscription starts at \$50 per-server, plus \$5,000 for the accompanying central console.
- Support features include phone-assisted installation, Web-based support and ongoing product updates.
- The S3 Control PCI Pro Edition is upgradeable to Solidcore's S3 Control Enterprise Edition product for more comprehensive change control and IT operational benefits.



Solution Centre Limited
Vickers House
Priestley Road
Basingstoke, RG24 9NP.
Tel: 01256 818600
Fax: 01256 819600
E-Mail: sales@solutioncentre.co.uk
www.solutioncentre.co.uk

solidcore[®]

888.210.6530
sales@solidcore.com
www.solidcore.com